



Mukwonago Multi-Tenant Industrial Building / Land

Boxhorn Drive, Mukwonago,
WI 53120



Build-to-Suit Industrial Building For Sale or Lease

Building Size 100,000 SF	Parcel Size 120 Acres	Clear Height 32 FT	Column Space 50 X 50	Electrical: We Energies at property
Loading Docks Up to 90	Access to Rail	Lights LED	Water: Municipal water at property	
Fire Protection ESFR	Office Improvements As Needed		Sewer: Municipal Sewer at property	

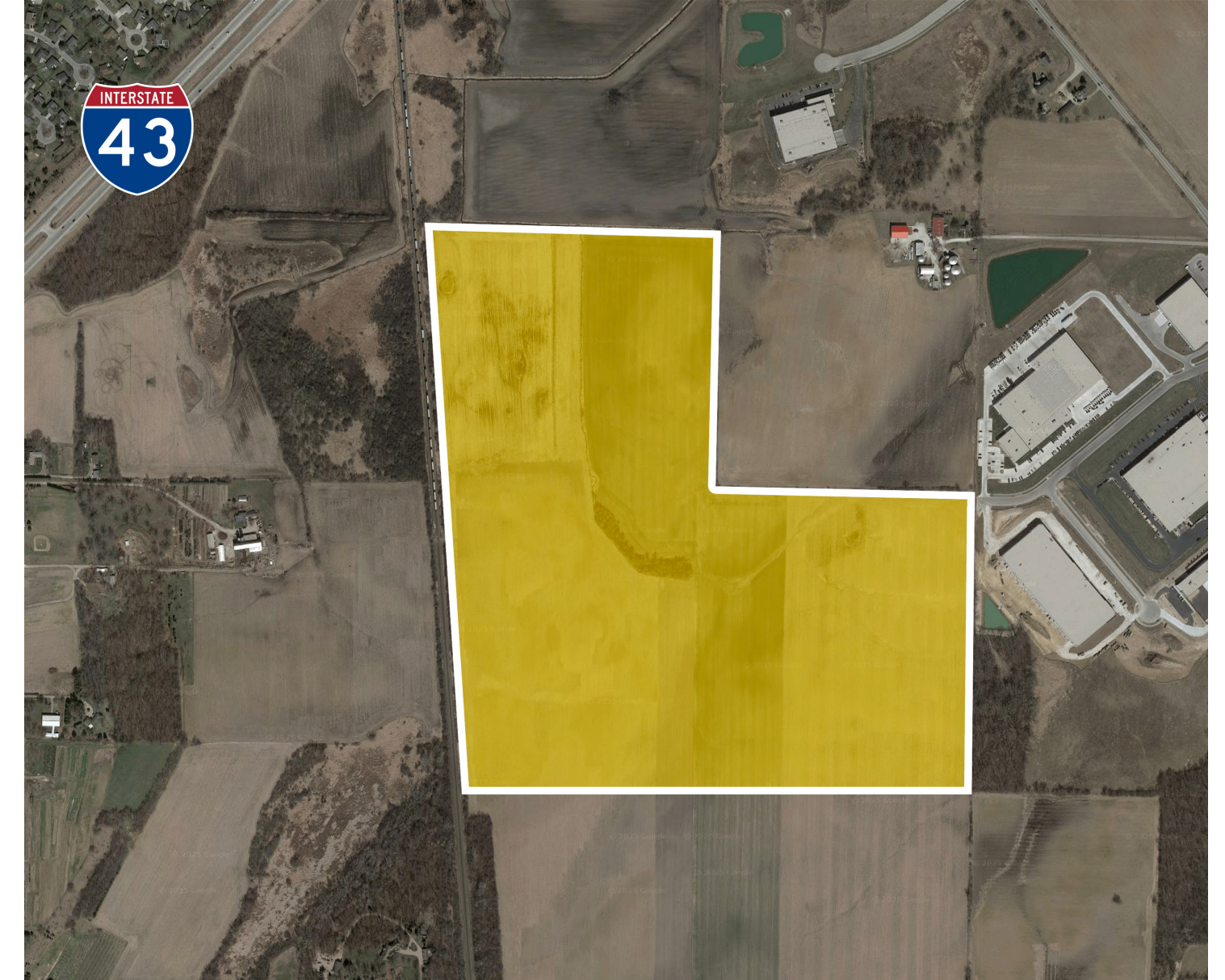
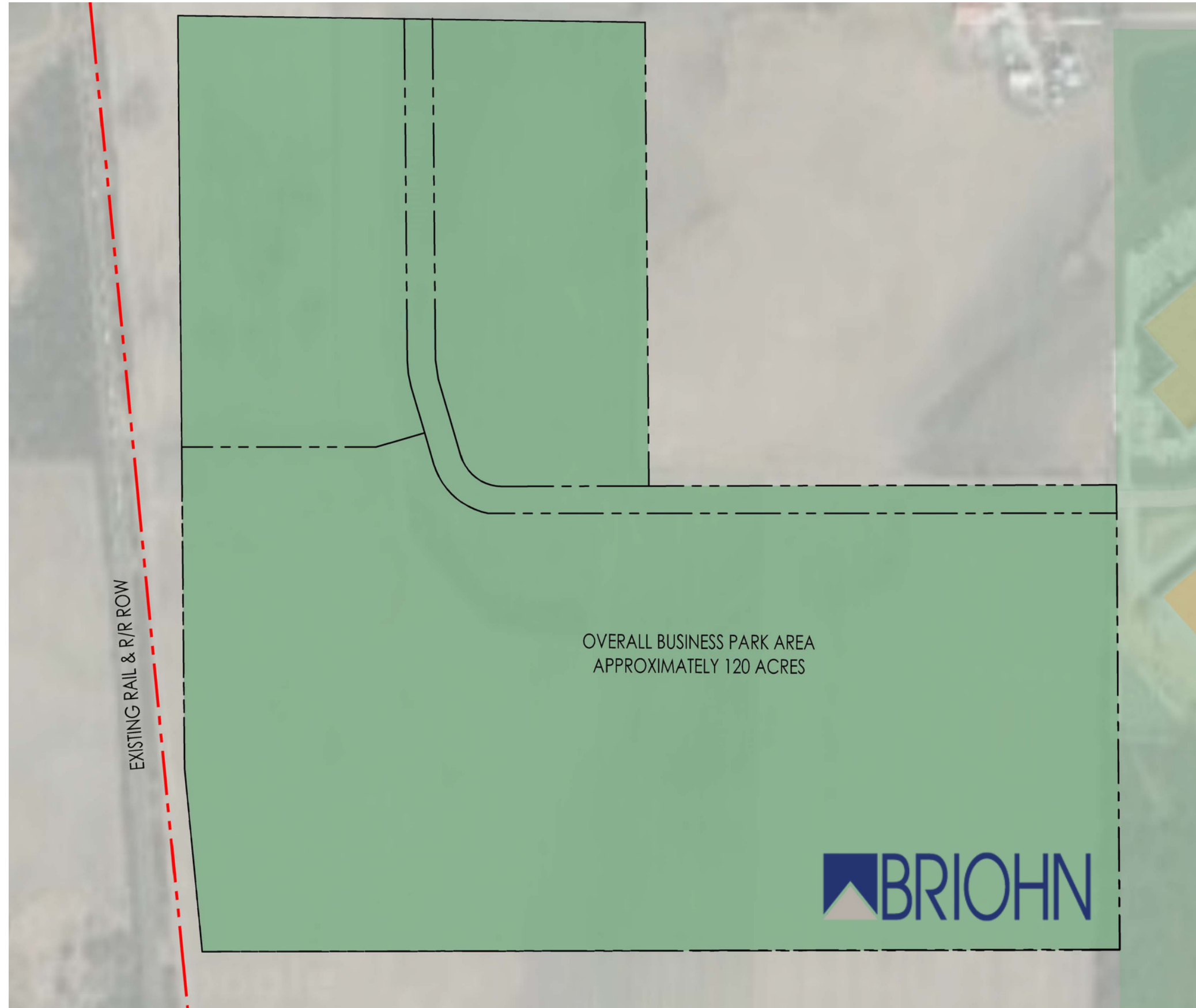
Scan for Google Maps



WWW.BRIOHN.COM

262.790.0500

JJURSENAS@BRIOHN.COM



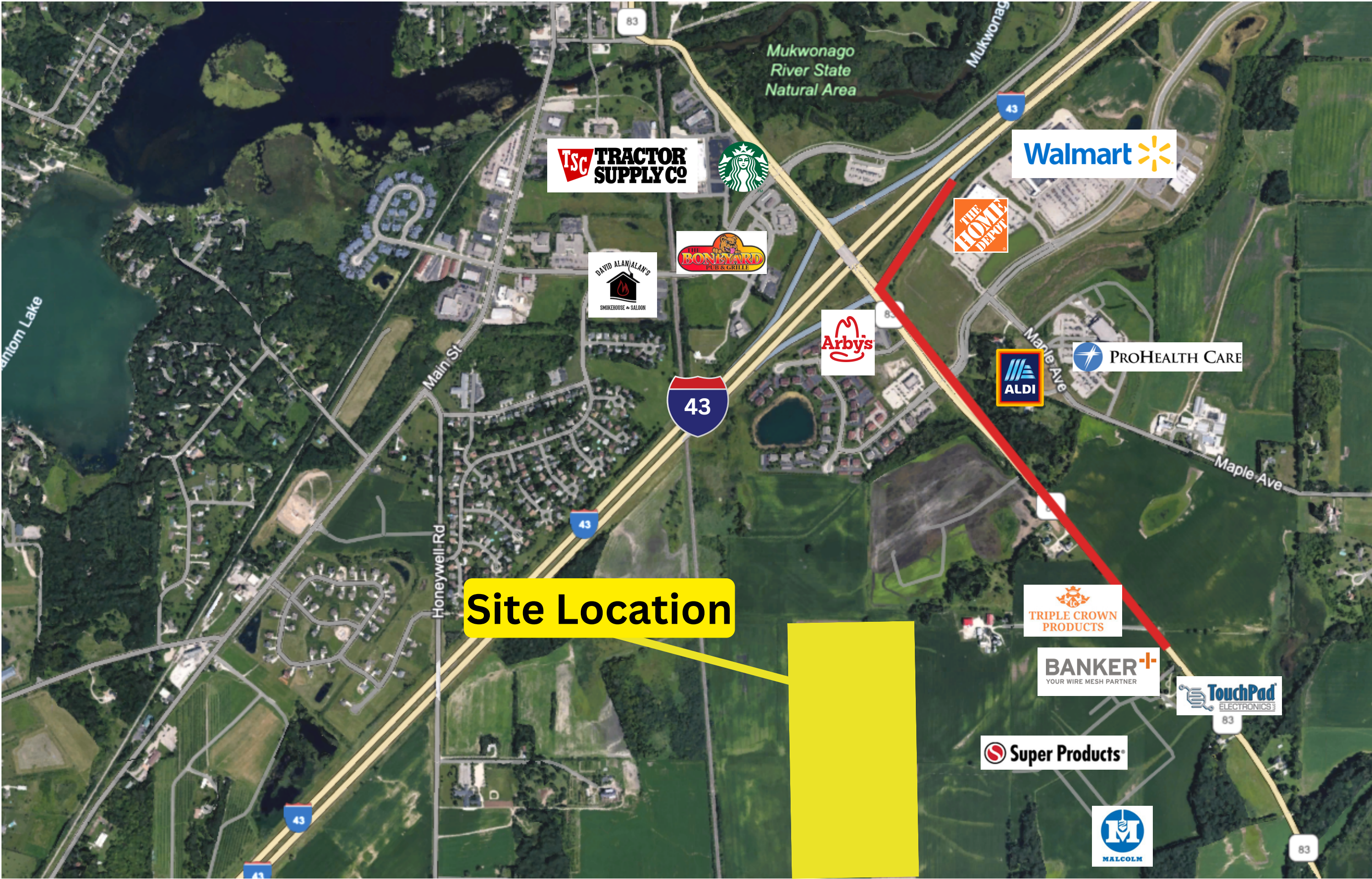
Conceptual Site Plan

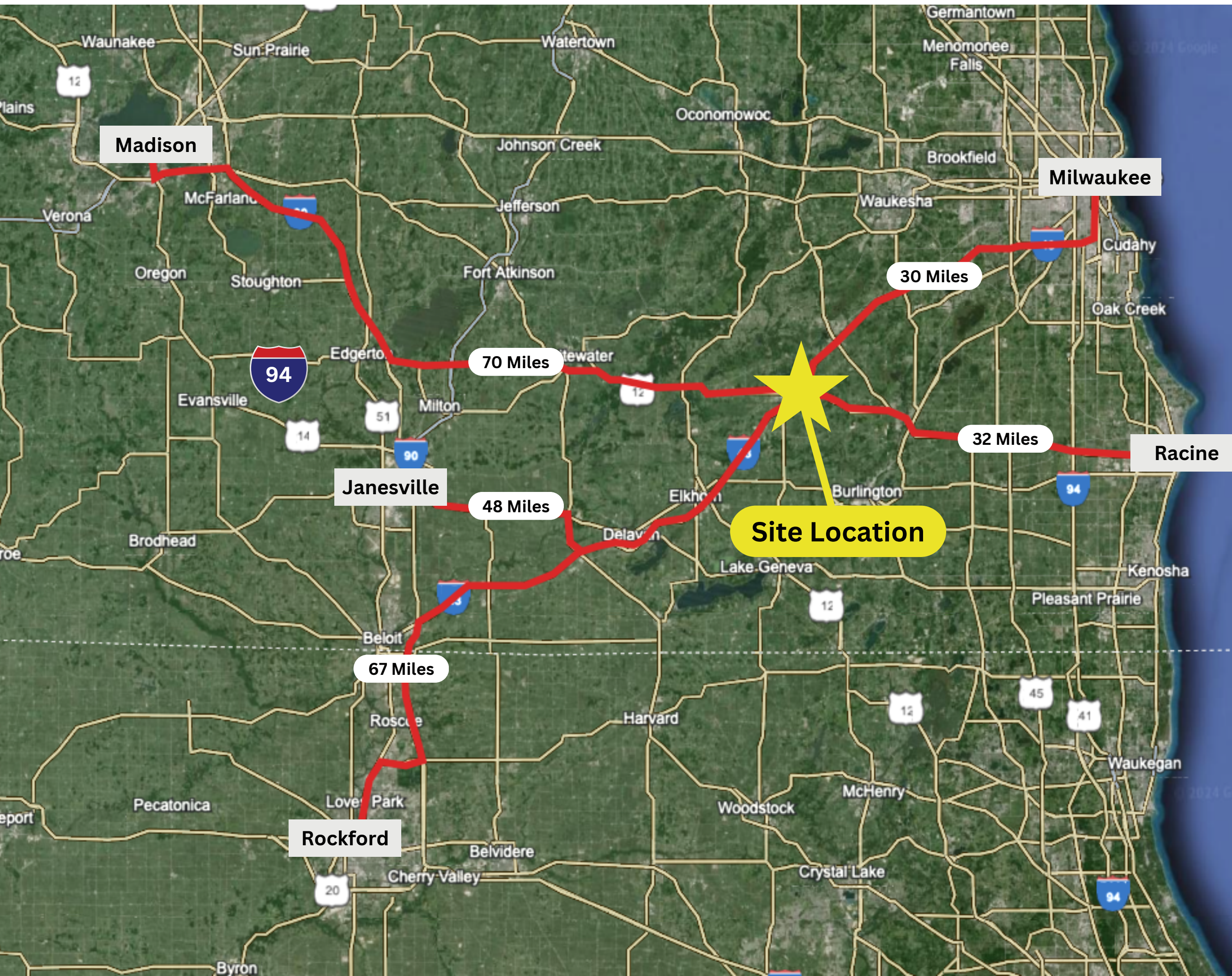
Area Overview

The area southwest of Boxhorn Drive in Mukwonago, WI 53120 is characterized by its picturesque rural surroundings and proximity to natural attractions such as parks and hiking trails. Additionally, its strategic location near highways offers businesses convenient access for distribution and accessibility to both customers and suppliers. It's also a bustling business hub, with numerous other companies already established, providing networking opportunities and a supportive environment for new businesses aiming to thrive in a serene setting.

Distance to Highway

- 1 mile to 43 on ramp





Contact



Joe Jursenas



jjursenas@briohn.com



262.790.0500



Boxhorn Drive,
Mukwonago, WI 53120



3885 N Brookfield Rd #200,
Brookfield, WI 53045