



Genesse Multi-Tenant Industrial Building / Land

W339S1742 County Trunk
HWY C, Dousman, WI 53118



Build-to-Suit Industrial Building For Sale or Lease

Building Size
Varying SF

Parcel Size
10-100 Acres

Clear Height
32 FT

Column Space
50 X 50

Electrical:
We Energies at property

Loading Docks
Varying

Drive-In Doors
Varying

Parking Spots
Varying

Planned Industrial
Outside Storage Permitted

Water:
Municipal water at property

Lights
LED

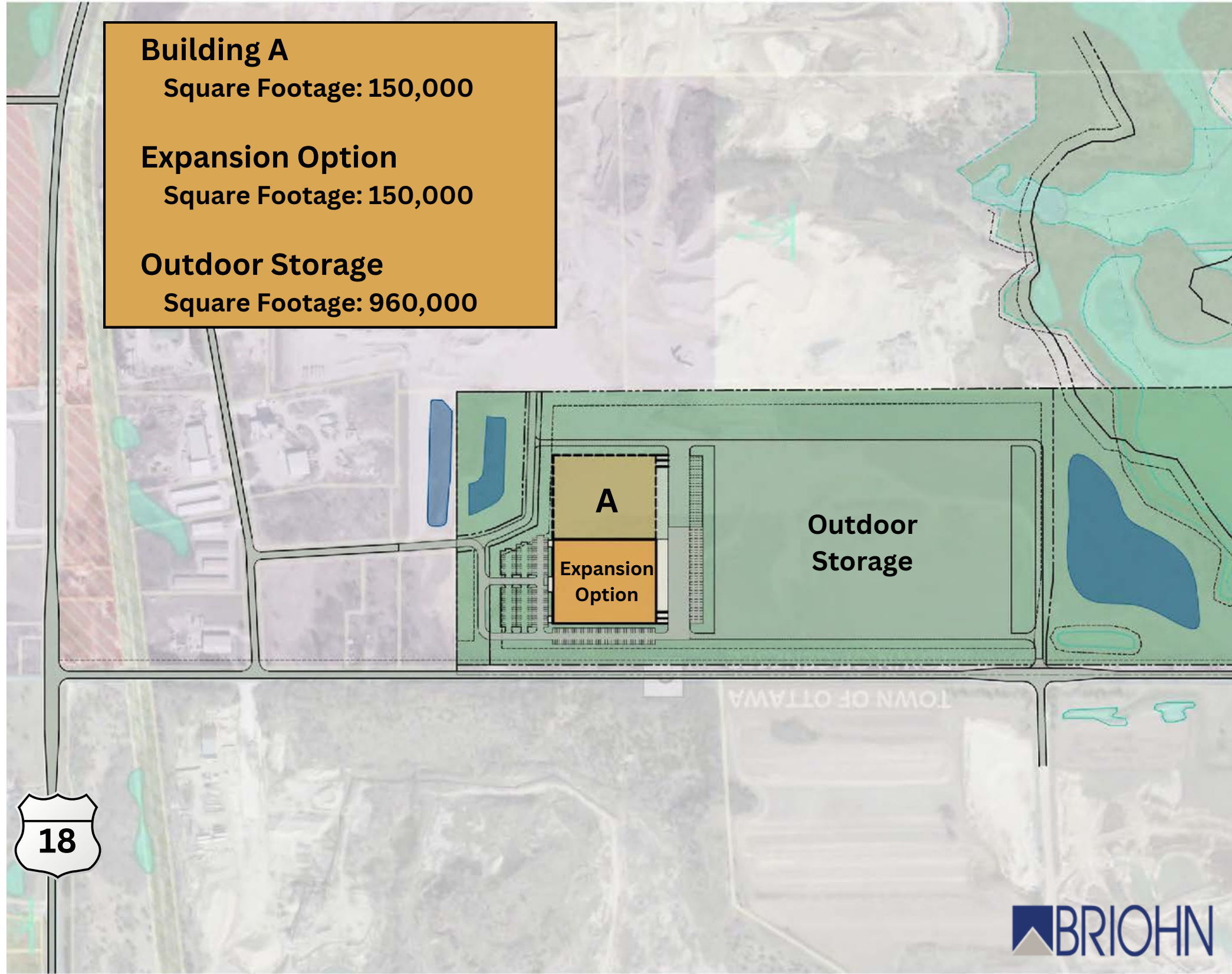
ESFR Fire Protection

Office Improvements as Needed

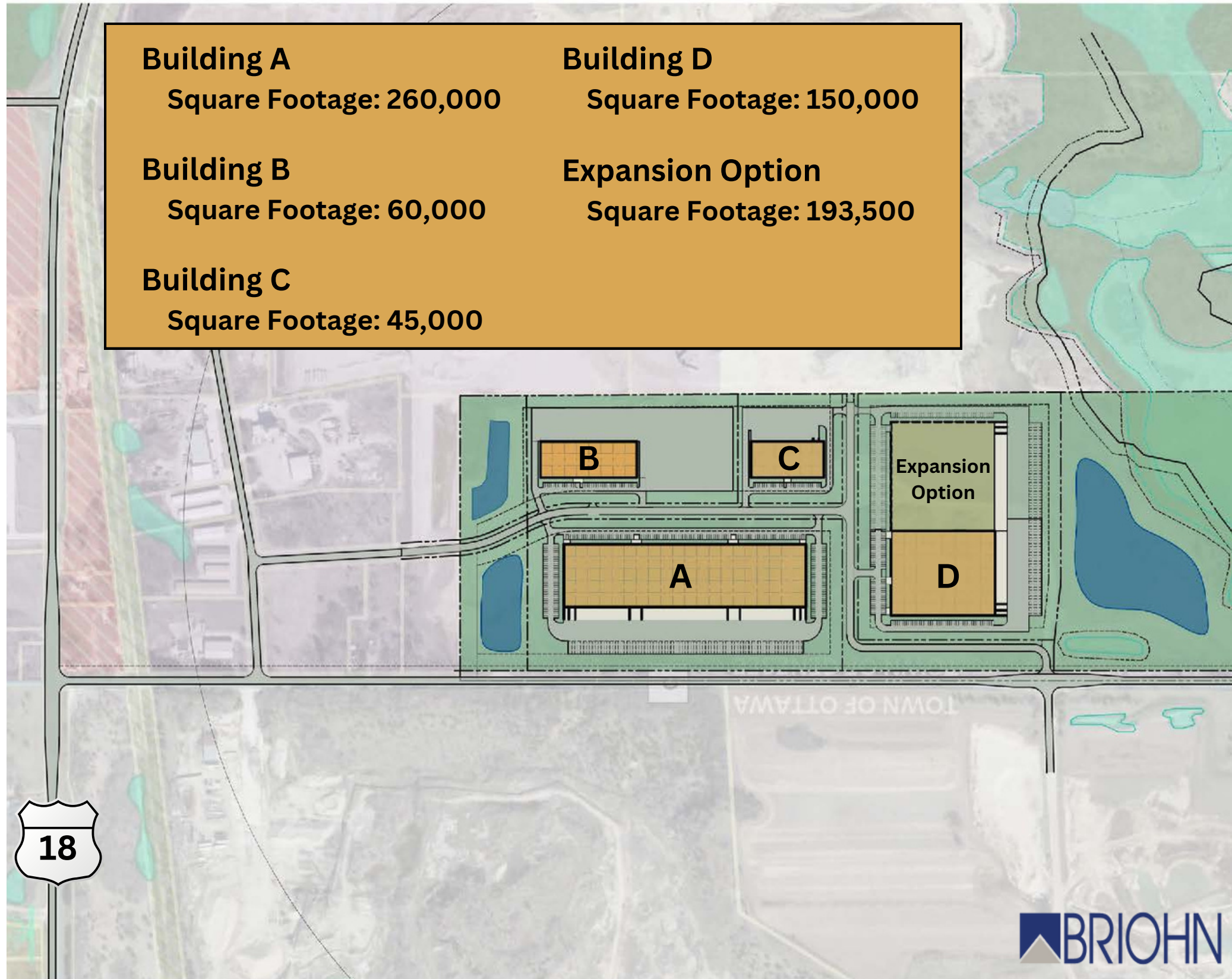
Sewer:
Municipal Sewer at property

Scan for Google Maps

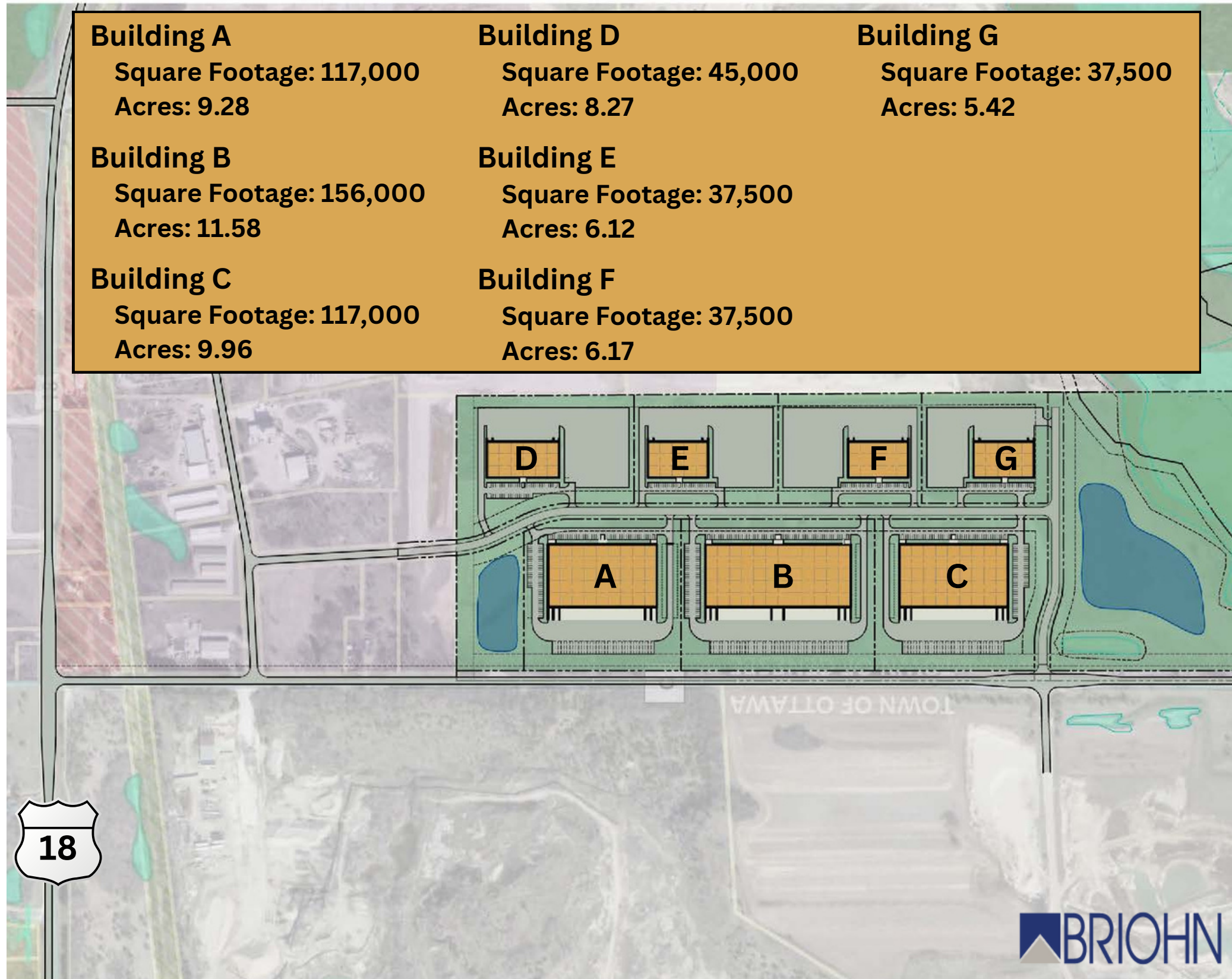




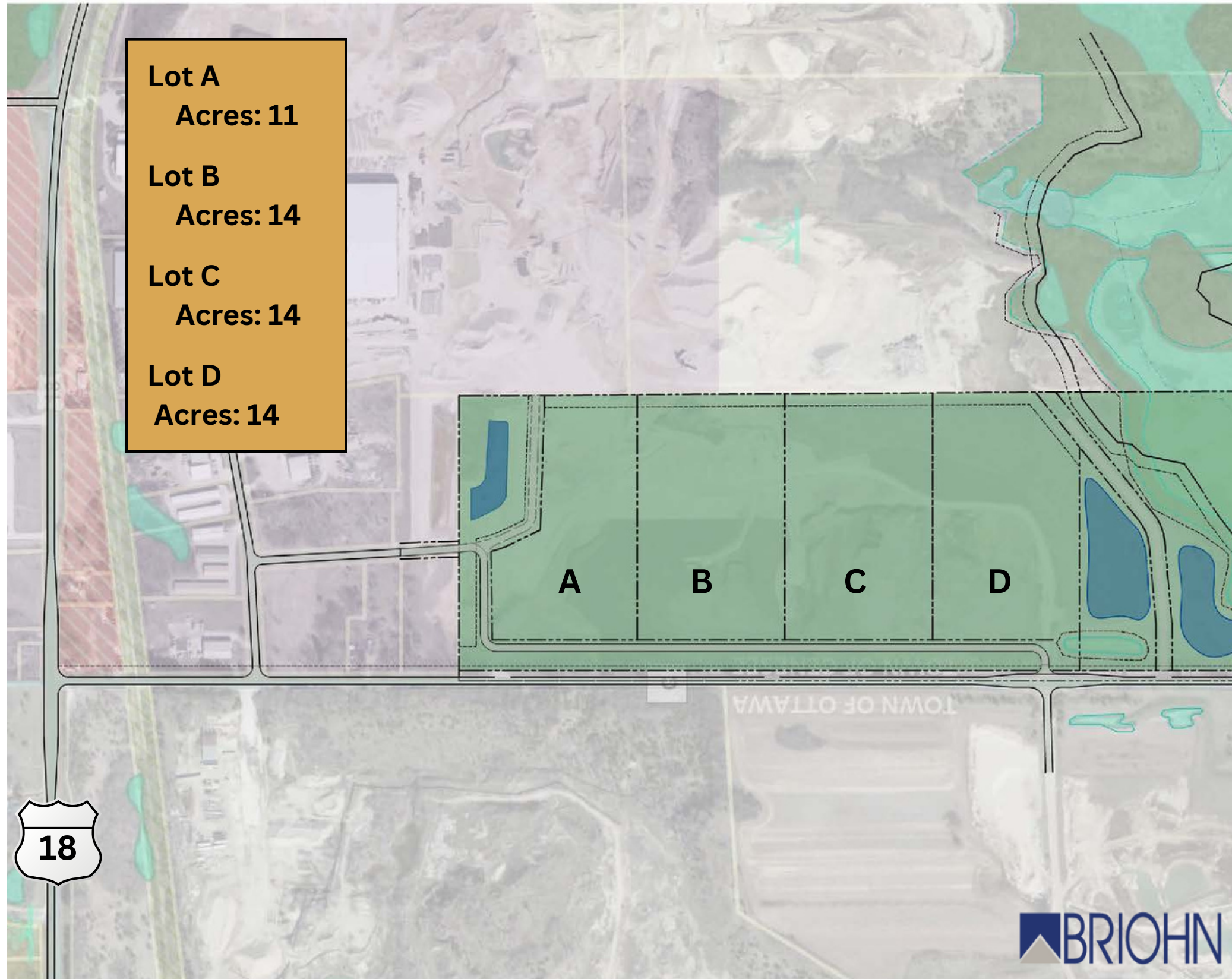
Conceptual Site Plan



Conceptual Site Plan



Conceptual Site Plan



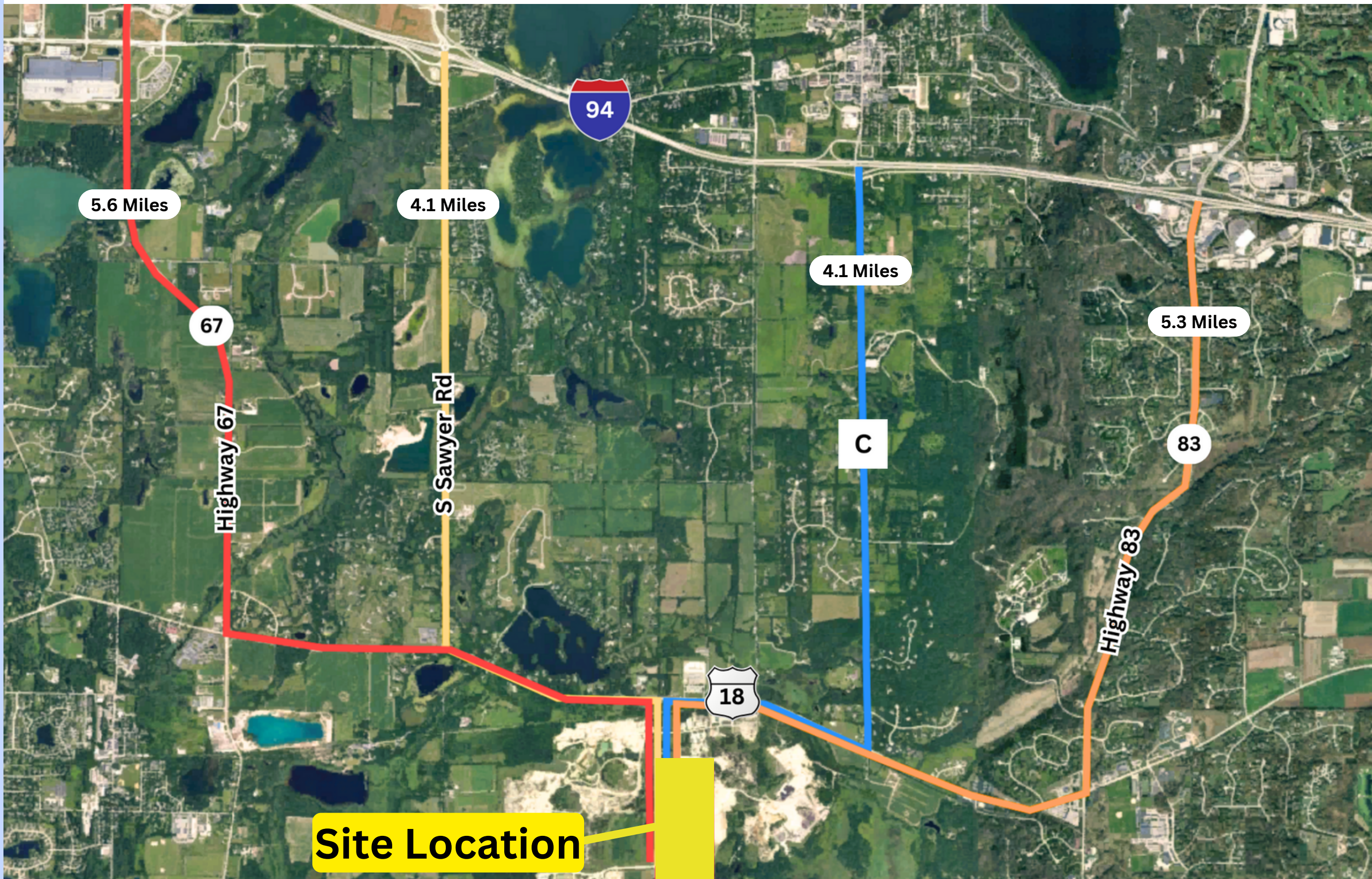
Conceptual Site Plan

Area Overview

This location offers several benefits for businesses. Firstly, its proximity to major highways ensures easy accessibility for both customers and suppliers, facilitating efficient transportation and distribution networks. Additionally, the surrounding area provides a conducive environment for business growth, with a mix of commercial activity and residential communities, offering potential customer bases and opportunities for collaboration. Overall, this location presents a strategic advantage for companies looking to establish a strong presence and capitalize on the area's economic opportunities.

Distance to Highway

- 4-5 miles to 94 on ramp





Contact



Joe Jursenas



jjursenas@briohn.com



262.790.0500



W339S1742 County Trunk
HWY C, Dousman, WI 53118



3885 N Brookfield Rd #200,
Brookfield, WI 53045